



NASHVILLE  
CIVIC  
DESIGN  
CENTER



# Creating a Walkable Green Hills

An aerial photograph of a suburban shopping center. The image shows a wide, multi-lane road (Hillsboro Pike) running through the center. On both sides of the road, there are numerous strip malls and commercial buildings with large surface parking lots. The surrounding area is a mix of residential houses and more commercial structures. The overall scene illustrates a car-oriented development model.

## **Making A Healthy Community For Green Hills**

Green Hills is a shopping destination center that was designed around the automobile. The construction of the Mall has spurred commercial development along Hillsboro Pike, in a suburban, strip-mall format with surface parking fronting the corridor. This type of development is not conducive to walking or biking, but instead increases road congestion and discourages a healthy lifestyle.



Existing conditions on Hillsboro Rd.



Envisioned conditions on Hillsboro Rd.



Potential pedestrian and bicycle connection for The Green Hills YMCA

# Green Hills Suggestions

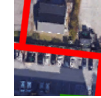
Photo Spots



Pedestrian Barriers



Necessary Pedestrian Connections



Adequate Pedestrian Connections



Poor Pedestrian Connections





## Examples of Pedestrian Barriers Hillsboro Dr

1. No sidewalks on important pedestrian connection
2. Construction forcing pedestrians into traffic

### **Bandywood to Hill Center**

3. Pedestrians climbing retaining wall
4. Pedestrian hopping fence to get to Bandywood
5. Pedestrian hopping fence to get to Hill Center

\*These Photographs were taken in the span of 30 min at 10:30 am on a week day

## Walkability Issues In Green Hills

People from all over Middle Tennessee come to Green Hills to do their shopping. The biggest issue with coming to this area to shop is dealing with the automotive congestion. Most people will drive from one parking lot to the next, even when a desired store is less than a tenth of a mile away. The reason most people will drive between stores is because the pedestrian infrastructure is lacking, it is unenjoyable and even dangerous to walk in this area.

TURBO (**T**actical **UR**Banism **O**rganizers), in partnership with the Alliance For Green Hills and the Nashville Civic Design Center, created a fun, festive, and safe environment for shoppers to walk between the Green Hills Mall and Hill Center during the Christmas shopping season. The Hillsboro High School Carolers serenaded shoppers at The Ballroom on Bandywood Dr, featuring a pop-up festival with snacks, cider and a place to enjoy the holiday cheer.

The intention for this pop-up fest was to raise awareness about how walkable the Green Hills area actually is. There is also a plan in *Shaping The Healthy Community: The Nashville Plan* that would connect the Bandywood Shops to Hill Center. This plan uses land from NES Utilities that is currently underutilized.



*Carolers singing at pop-up event*



*Underutilized NES land between Bandywood and Hill*



*Vision for underutilized NES land between Bandywood and Hill Center*

4

Same area as photo 4 from suggestion map



before

Connection from Hill Center to Bandywood Shops



after

Proposed improvements to connect Hill Center to Bandywood Shops



before

Bandywood shopping area



after

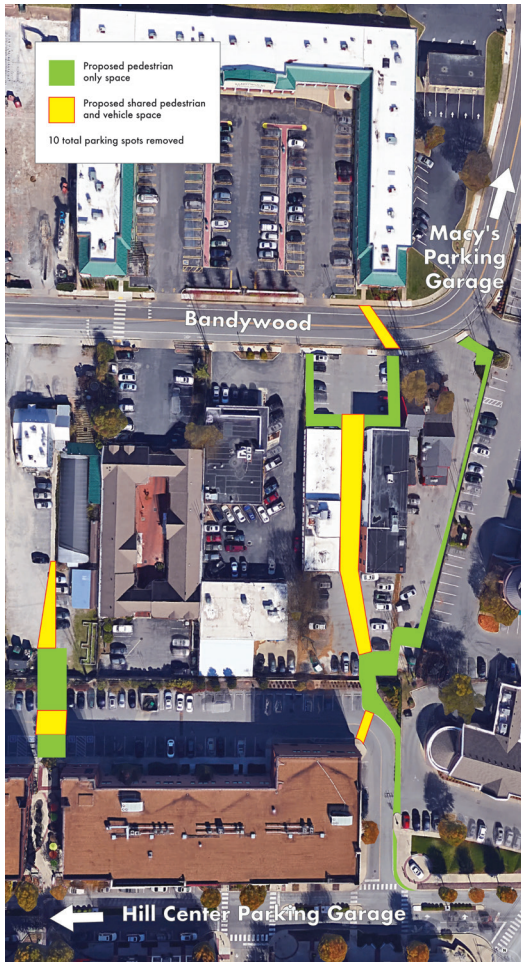
Proposed improvements Bandywood shopping area



## Simple Connections Can Make A Difference

TURBO looked at simple connections that would have a significant impact on the ability to walk and shop. When large parking areas are connected by pedestrian walkways, it could cut down on traffic because shoppers would drive less from store to store. This would also create a better retail environment, as shoppers would be more likely to stop in shops as they walk by.

If all the green areas on the map were converted to pedestrians-only space, the total amount of parking spaces removed would only add up to 10.



*This picture shows a simple connection from the Macy's Parking Garage to an existing sidewalk and crosswalk. The addition of a short walkway would make a safe wheelchair connection to Bandywood from Green Hills Mall. These are the types of connections necessary to encourage walking in this area.*



*View over Hill Center looking towards Bandywood*



*View over The Shops On Bandywood looking towards Hill Center*

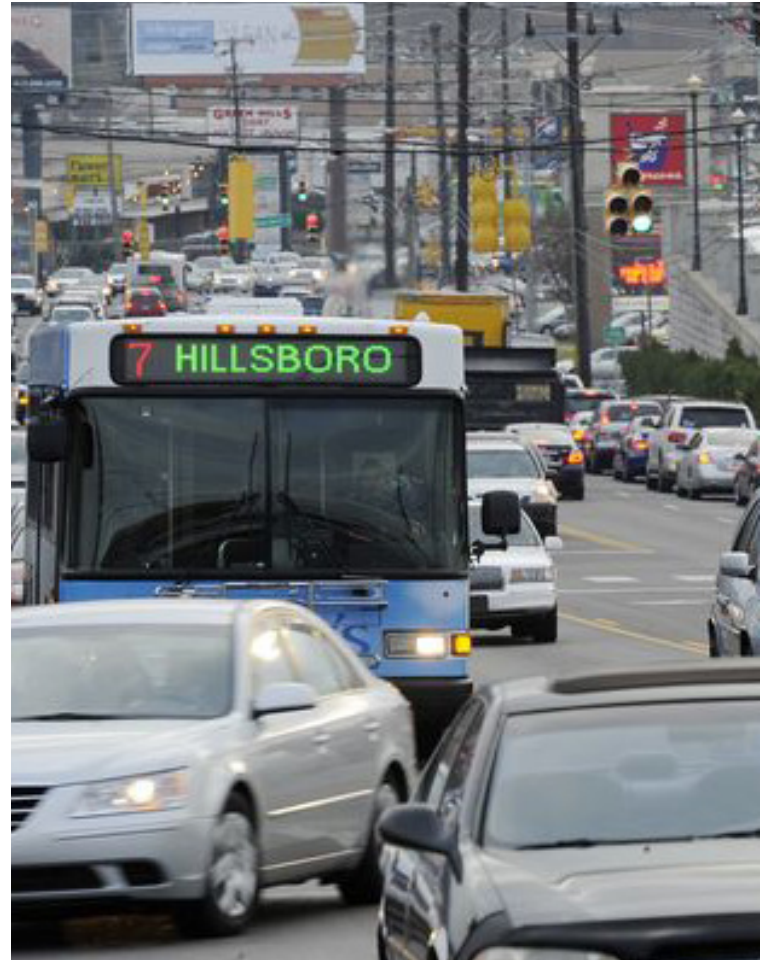
**Infill suggestions:** These images show infill development around the Bandywood corner shops that would encourage walking. This type of infill would need a partnership from all surrounding business that would make it acceptable to share parking areas.

## Green Hills Will Benefit From Walking

Traffic is a huge barrier to walking in this area of Nashville. If walkable environments are made a priority in Green Hills, walking instead of driving becomes a viable option and more people choosing alternatives to driving.

Simple connections are an immediate solution that can be implemented quickly. These short connections will allow more freedom when shopping and benefit all businesses along these new pedestrian pathways.

By creating a walkable Green Hills, business will see an increase in “stop in” pedestrian traffic. With more people choosing to walk instead of drive, the traffic volume could change for the better which will alleviate traffic for people traveling on Hillsboro Pike. Small steps can make a big difference that will enhance the look, feel, and commercial viability of Green Hills.



NASHVILLE  
CIVIC  
DESIGN  
CENTER

THINK DESIGN CREATE SUSTAIN

Founded in 2000, the Nashville Civic Design Center (NCDC) is a nonprofit organization whose mission is to elevate the quality of Nashville's built environment and to promote public participation in the creation of a more beautiful and functional city for all.

**Towards this end, the NCDC:**

**Promotes** the Ten Principles of The Plan of Nashville.

**Educates** the public about civic design through: lectures by prominent speakers; presentations on the history and practice of urban design; and continuing education opportunities for design and development professionals

**Provides** professional staff and highly qualified design interns to consult on civic and other community development projects.

**Facilitates** public dialogue about civic design and its impact in Nashville.

**Researches** and publishes reports on various civic design issues.

This publication was designed by the Nashville Civic Design Center